

35/200

01/23/2010 21:18 706 276 6186

RARE EARTH RESEARCH

#1544 P.007 /067

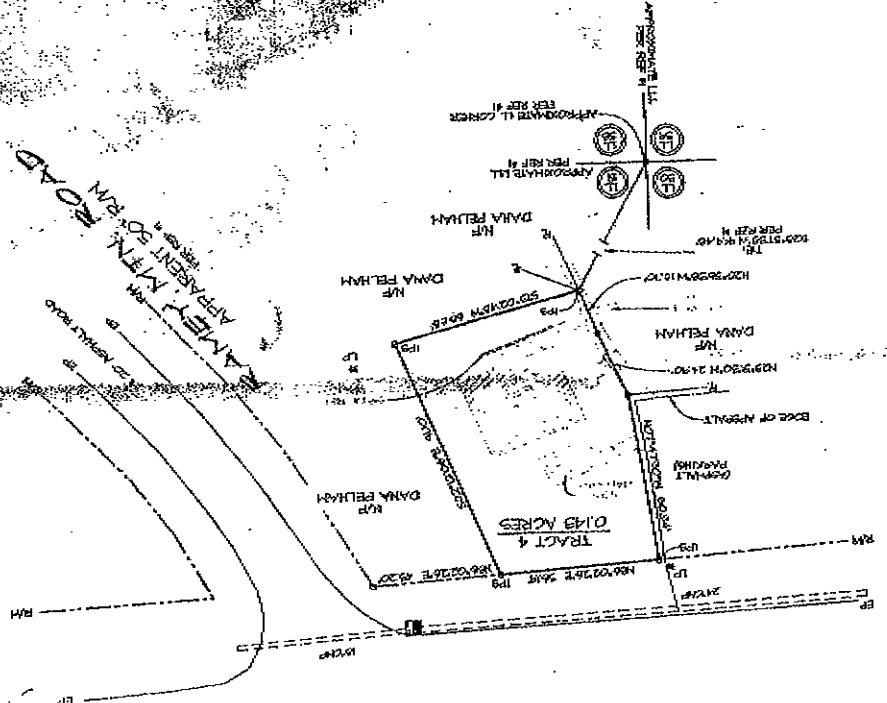
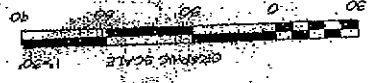
LANDTECH SERVICES, INC.
6777 C Hill Creek Road
Elk River, TN 37060
615-850-0000

THE SHORR & PHELPS TRACT
TRACT 4 OF THE SHORR & PHELPS TRACT
LOCATED IN
DAVA COUNTY, TENNESSEE

NOTE:
BE PAID DATA FROM WHICH THIS PLAN IS
BASED HAS A DIRECT PREDECESSOR PLAN
NO. 222,000 AND HAS A CUMULATIVE AREA
OF 100.00 ACRES. THIS PLAN IS A
REVISION OF SAID PREDECESSOR PLAN
AND HAS A TOTAL AREA OF 100.00
ACRES. THIS PLAN IS A REVISION OF
SAID PREDECESSOR PLAN AND HAS A
TOTAL AREA OF 100.00 ACRES. THIS
PLAN HAS BEEN CALLED ALTHOUGH A
CORRECTION IS FOUND TO BE NECESSARY
IN THIS CASE IN ORDER TO
THE PLAN IS FOR THE BENEFIT OF
THE PARTIES TO THE PLAN AND NOT
FOR THE BENEFIT OF ANY OTHER
PARTY. THIS PLAN IS SUBJECT TO ALL
RIGHTS OF WAY, EASEMENTS, AND
ENCUMBRANCES WHICH ARE NOT SHOWN
HEREON. THE PROPERTY SHOWN HEREON DOES
NOT INCLUDE A FLOOD HAZARD
ZONE AS PER TOWN COUNTY PLANNING AND
ZONING DEPARTMENT OF DAVID JULY 05, 1998.

THIS PLAN IS FOR RARE EARTH RESEARCH, INC.
PREPARED BY LANDTECH SERVICES, INC.
DATE 6/10/09

- 01.000 01.000
- 02.000 02.000
- 03.000 03.000
- 04.000 04.000
- 05.000 05.000
- 06.000 06.000
- 07.000 07.000
- 08.000 08.000
- 09.000 09.000
- 10.000 10.000
- 11.000 11.000
- 12.000 12.000
- 13.000 13.000
- 14.000 14.000
- 15.000 15.000
- 16.000 16.000
- 17.000 17.000
- 18.000 18.000
- 19.000 19.000
- 20.000 20.000
- 21.000 21.000
- 22.000 22.000
- 23.000 23.000
- 24.000 24.000
- 25.000 25.000
- 26.000 26.000
- 27.000 27.000
- 28.000 28.000
- 29.000 29.000
- 30.000 30.000
- 31.000 31.000
- 32.000 32.000
- 33.000 33.000
- 34.000 34.000
- 35.000 35.000
- 36.000 36.000
- 37.000 37.000
- 38.000 38.000
- 39.000 39.000
- 40.000 40.000
- 41.000 41.000
- 42.000 42.000
- 43.000 43.000
- 44.000 44.000
- 45.000 45.000
- 46.000 46.000
- 47.000 47.000
- 48.000 48.000
- 49.000 49.000
- 50.000 50.000
- 51.000 51.000
- 52.000 52.000
- 53.000 53.000
- 54.000 54.000
- 55.000 55.000
- 56.000 56.000
- 57.000 57.000
- 58.000 58.000
- 59.000 59.000
- 60.000 60.000
- 61.000 61.000
- 62.000 62.000
- 63.000 63.000
- 64.000 64.000
- 65.000 65.000
- 66.000 66.000
- 67.000 67.000
- 68.000 68.000
- 69.000 69.000
- 70.000 70.000
- 71.000 71.000
- 72.000 72.000
- 73.000 73.000
- 74.000 74.000
- 75.000 75.000
- 76.000 76.000
- 77.000 77.000
- 78.000 78.000
- 79.000 79.000
- 80.000 80.000
- 81.000 81.000
- 82.000 82.000
- 83.000 83.000
- 84.000 84.000
- 85.000 85.000
- 86.000 86.000
- 87.000 87.000
- 88.000 88.000
- 89.000 89.000
- 90.000 90.000
- 91.000 91.000
- 92.000 92.000
- 93.000 93.000
- 94.000 94.000
- 95.000 95.000
- 96.000 96.000
- 97.000 97.000
- 98.000 98.000
- 99.000 99.000
- 100.000 100.000



U.S. HWY. NO. 76
GA. HWY. NO. 2
(RW VARIES)
EAS. REF. 4

NORTH VARIES FOR APPARENT ROAD
EAS. REF. 5

35/200

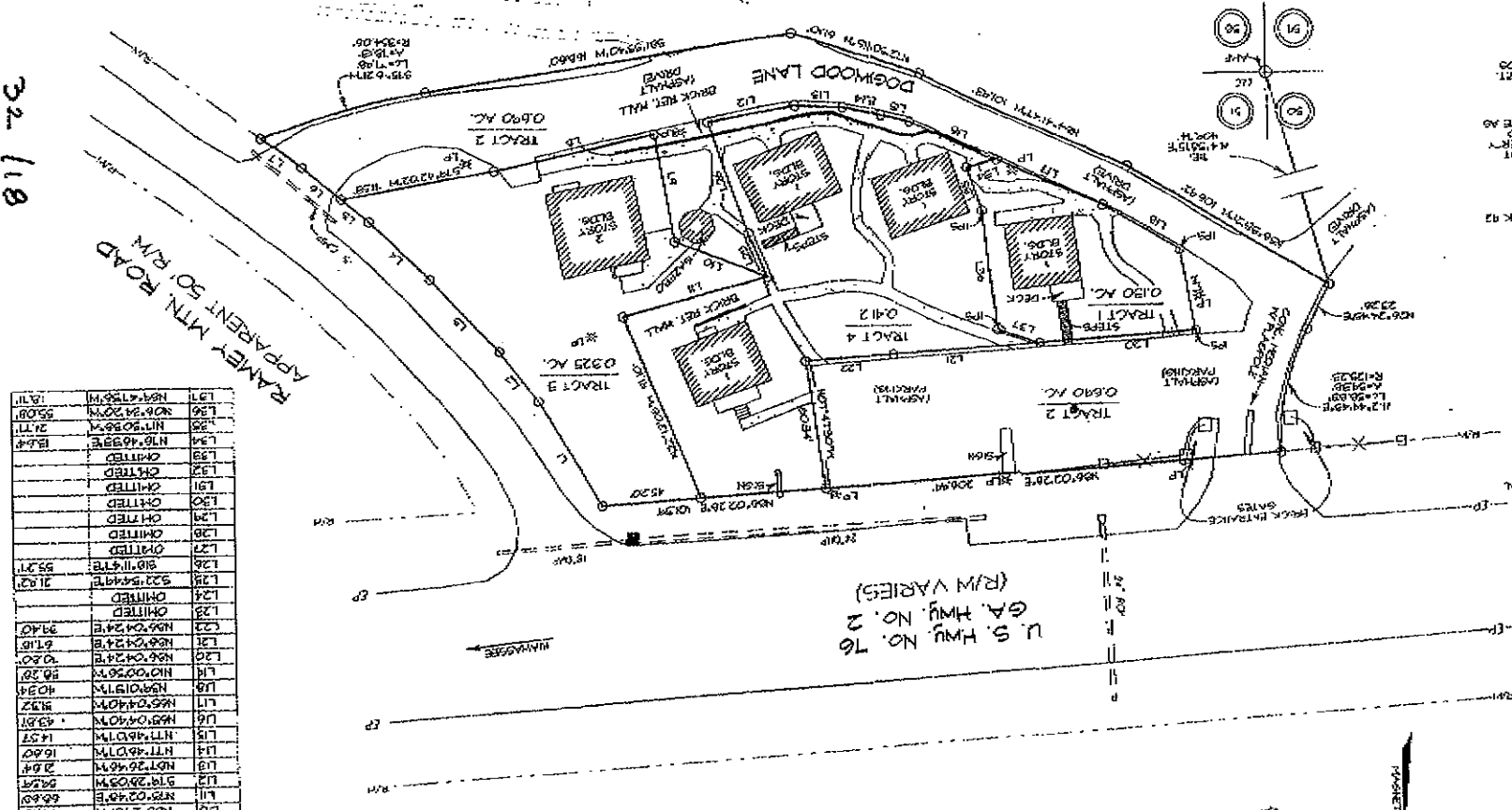
Plot Book 35 Page 200

LINE TABLE

LINE	BEARINGS	DISTANCE
U1	S50°10'44"E	58.41
U2	S87°04'48"E	21.49
U3	S42°49'48"E	44.72
U4	S46°25'00"E	54.63
U5	S49°47'45"E	55.27
U6	S48°47'45"E	55.27
U7	S71°38'37"E	25.21
U8	S71°38'37"E	25.21
U9	S71°38'37"E	25.21
U10	S71°38'37"E	25.21
U11	S71°38'37"E	25.21
U12	S71°38'37"E	25.21
U13	S71°38'37"E	25.21
U14	S71°38'37"E	25.21
U15	S71°38'37"E	25.21
U16	S71°38'37"E	25.21
U17	S71°38'37"E	25.21
U18	S71°38'37"E	25.21
U19	S71°38'37"E	25.21
U20	S71°38'37"E	25.21
U21	S71°38'37"E	25.21
U22	S71°38'37"E	25.21
U23	S71°38'37"E	25.21
U24	S71°38'37"E	25.21
U25	S71°38'37"E	25.21
U26	S71°38'37"E	25.21
U27	S71°38'37"E	25.21
U28	S71°38'37"E	25.21
U29	S71°38'37"E	25.21
U30	S71°38'37"E	25.21
U31	S71°38'37"E	25.21
U32	S71°38'37"E	25.21
U33	S71°38'37"E	25.21
U34	S71°38'37"E	25.21
U35	S71°38'37"E	25.21
U36	S71°38'37"E	25.21
U37	S71°38'37"E	25.21
U38	S71°38'37"E	25.21
U39	S71°38'37"E	25.21
U40	S71°38'37"E	25.21
U41	S71°38'37"E	25.21
U42	S71°38'37"E	25.21
U43	S71°38'37"E	25.21
U44	S71°38'37"E	25.21
U45	S71°38'37"E	25.21
U46	S71°38'37"E	25.21
U47	S71°38'37"E	25.21
U48	S71°38'37"E	25.21
U49	S71°38'37"E	25.21
U50	S71°38'37"E	25.21
U51	S71°38'37"E	25.21
U52	S71°38'37"E	25.21
U53	S71°38'37"E	25.21
U54	S71°38'37"E	25.21
U55	S71°38'37"E	25.21
U56	S71°38'37"E	25.21
U57	S71°38'37"E	25.21
U58	S71°38'37"E	25.21
U59	S71°38'37"E	25.21
U60	S71°38'37"E	25.21
U61	S71°38'37"E	25.21
U62	S71°38'37"E	25.21
U63	S71°38'37"E	25.21
U64	S71°38'37"E	25.21
U65	S71°38'37"E	25.21
U66	S71°38'37"E	25.21
U67	S71°38'37"E	25.21
U68	S71°38'37"E	25.21
U69	S71°38'37"E	25.21
U70	S71°38'37"E	25.21
U71	S71°38'37"E	25.21
U72	S71°38'37"E	25.21
U73	S71°38'37"E	25.21
U74	S71°38'37"E	25.21
U75	S71°38'37"E	25.21
U76	S71°38'37"E	25.21
U77	S71°38'37"E	25.21
U78	S71°38'37"E	25.21
U79	S71°38'37"E	25.21
U80	S71°38'37"E	25.21
U81	S71°38'37"E	25.21
U82	S71°38'37"E	25.21
U83	S71°38'37"E	25.21
U84	S71°38'37"E	25.21
U85	S71°38'37"E	25.21
U86	S71°38'37"E	25.21
U87	S71°38'37"E	25.21
U88	S71°38'37"E	25.21
U89	S71°38'37"E	25.21
U90	S71°38'37"E	25.21
U91	S71°38'37"E	25.21
U92	S71°38'37"E	25.21
U93	S71°38'37"E	25.21
U94	S71°38'37"E	25.21
U95	S71°38'37"E	25.21
U96	S71°38'37"E	25.21
U97	S71°38'37"E	25.21
U98	S71°38'37"E	25.21
U99	S71°38'37"E	25.21
U100	S71°38'37"E	25.21

ACPRAGE CHART

TRACT 1 = 0.690 ACRES
TRACT 2 = 0.690 ACRES
TRACT 3 = 0.690 ACRES
TRACT 4 = 0.412 ACRES
TOTAL AREA = 1.987 ACRES

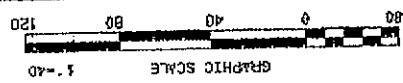


REVISION:
A CORRECT TRACTS 2, 3 & 4, REVISE
ACPRAGE CHART, REVISE TRACT NUMBERS
& LINE TABLE
DATE: 10/1/09
FIELD: 10/1/09
DATE: 10/1/09
PLAT: 10/1/09

THE SHoppes AT FIELDSTONE, INC.

LOCATED IN
LAND LOT 51, 11TH DISTRICT, 1ST SECTION
TOWNS COUNTY, GEORGIA

TOWNS County, Georgia
Emmett
1-5-04
Cecil Oye
Clerk Superior Court



MAVTECH SERVICES, INC.
672-C Bell Creek Road
P.O. Box 669
Hiwassee, Georgia 30545
706-896-2000

NOTES:
FROM THIS (2/28/09) WERE SET AT THE MAIN LOT
CORNERS OF TRACT 1. THE SURVEYING PROCEEDINGS
LINES ACCORDING TRACTS 2, 3, 4 ARE CALCULATED
AND CORNERS WILL BE SET AT A LATER DATE AS
DIRECTED BY THE PROPERTY OWNER.
THE FIELD DATA FROM THIS PLAN IS
BASED ON A CLOSURE PERFORMED ON
ONE FOOT IN THE YEAR 2007 SECOND
AND AN ADJUSTED SECTION USING A
LEAST SQUARES ADJUSTMENT. EQUIPMENT
USED WAS A TOPCON 225.
THIS PLAN HAS BEEN CALCULATED FOR A
METER ONE FOOT IN 1:40.
THIS PLAN WAS PREPARED WITH-OUT
THE BENEFIT OF A TITLE REPORT.
THIS PLAN IS FOR THE EXCLUSIVE USE
OF THE PARTY OR PARTIES SHOWN
AND OTHER THIRD PARTY.
THIS SURVEY IS SUBJECT TO ALL
RIGHTS OF WAY, EASEMENTS, RIGHTS
AND EASEMENTS
AND ENCUMBRANCES
THE PROPERTY SHOWN HEREON
DOES NOT INCLUDE A FLOOD HAZARD
ZONE AS PER TOWNS COUNTY FLOOD HAZARD
MAP 1928X0000 C DATED JULY 8, 1998

- 6600 ALUMINUM HOLLOW POST FENCE
- 6601 GALVANIZED METAL PIPE
- 6602 GALVANIZED METAL PIPE
- 6603 GALVANIZED METAL PIPE
- 6604 GALVANIZED METAL PIPE
- 6605 GALVANIZED METAL PIPE
- 6606 GALVANIZED METAL PIPE
- 6607 GALVANIZED METAL PIPE
- 6608 GALVANIZED METAL PIPE
- 6609 GALVANIZED METAL PIPE
- 6610 GALVANIZED METAL PIPE
- 6611 GALVANIZED METAL PIPE
- 6612 GALVANIZED METAL PIPE
- 6613 GALVANIZED METAL PIPE
- 6614 GALVANIZED METAL PIPE
- 6615 GALVANIZED METAL PIPE
- 6616 GALVANIZED METAL PIPE
- 6617 GALVANIZED METAL PIPE
- 6618 GALVANIZED METAL PIPE
- 6619 GALVANIZED METAL PIPE
- 6620 GALVANIZED METAL PIPE
- 6621 GALVANIZED METAL PIPE
- 6622 GALVANIZED METAL PIPE
- 6623 GALVANIZED METAL PIPE
- 6624 GALVANIZED METAL PIPE
- 6625 GALVANIZED METAL PIPE
- 6626 GALVANIZED METAL PIPE
- 6627 GALVANIZED METAL PIPE
- 6628 GALVANIZED METAL PIPE
- 6629 GALVANIZED METAL PIPE
- 6630 GALVANIZED METAL PIPE
- 6631 GALVANIZED METAL PIPE
- 6632 GALVANIZED METAL PIPE
- 6633 GALVANIZED METAL PIPE
- 6634 GALVANIZED METAL PIPE
- 6635 GALVANIZED METAL PIPE
- 6636 GALVANIZED METAL PIPE
- 6637 GALVANIZED METAL PIPE
- 6638 GALVANIZED METAL PIPE
- 6639 GALVANIZED METAL PIPE
- 6640 GALVANIZED METAL PIPE
- 6641 GALVANIZED METAL PIPE
- 6642 GALVANIZED METAL PIPE
- 6643 GALVANIZED METAL PIPE
- 6644 GALVANIZED METAL PIPE
- 6645 GALVANIZED METAL PIPE
- 6646 GALVANIZED METAL PIPE
- 6647 GALVANIZED METAL PIPE
- 6648 GALVANIZED METAL PIPE
- 6649 GALVANIZED METAL PIPE
- 6650 GALVANIZED METAL PIPE
- 6651 GALVANIZED METAL PIPE
- 6652 GALVANIZED METAL PIPE
- 6653 GALVANIZED METAL PIPE
- 6654 GALVANIZED METAL PIPE
- 6655 GALVANIZED METAL PIPE
- 6656 GALVANIZED METAL PIPE
- 6657 GALVANIZED METAL PIPE
- 6658 GALVANIZED METAL PIPE
- 6659 GALVANIZED METAL PIPE
- 6660 GALVANIZED METAL PIPE
- 6661 GALVANIZED METAL PIPE
- 6662 GALVANIZED METAL PIPE
- 6663 GALVANIZED METAL PIPE
- 6664 GALVANIZED METAL PIPE
- 6665 GALVANIZED METAL PIPE
- 6666 GALVANIZED METAL PIPE
- 6667 GALVANIZED METAL PIPE
- 6668 GALVANIZED METAL PIPE
- 6669 GALVANIZED METAL PIPE
- 6670 GALVANIZED METAL PIPE
- 6671 GALVANIZED METAL PIPE
- 6672 GALVANIZED METAL PIPE
- 6673 GALVANIZED METAL PIPE
- 6674 GALVANIZED METAL PIPE
- 6675 GALVANIZED METAL PIPE
- 6676 GALVANIZED METAL PIPE
- 6677 GALVANIZED METAL PIPE
- 6678 GALVANIZED METAL PIPE
- 6679 GALVANIZED METAL PIPE
- 6680 GALVANIZED METAL PIPE
- 6681 GALVANIZED METAL PIPE
- 6682 GALVANIZED METAL PIPE
- 6683 GALVANIZED METAL PIPE
- 6684 GALVANIZED METAL PIPE
- 6685 GALVANIZED METAL PIPE
- 6686 GALVANIZED METAL PIPE
- 6687 GALVANIZED METAL PIPE
- 6688 GALVANIZED METAL PIPE
- 6689 GALVANIZED METAL PIPE
- 6690 GALVANIZED METAL PIPE
- 6691 GALVANIZED METAL PIPE
- 6692 GALVANIZED METAL PIPE
- 6693 GALVANIZED METAL PIPE
- 6694 GALVANIZED METAL PIPE
- 6695 GALVANIZED METAL PIPE
- 6696 GALVANIZED METAL PIPE
- 6697 GALVANIZED METAL PIPE
- 6698 GALVANIZED METAL PIPE
- 6699 GALVANIZED METAL PIPE
- 6700 GALVANIZED METAL PIPE



32118

32118

32118