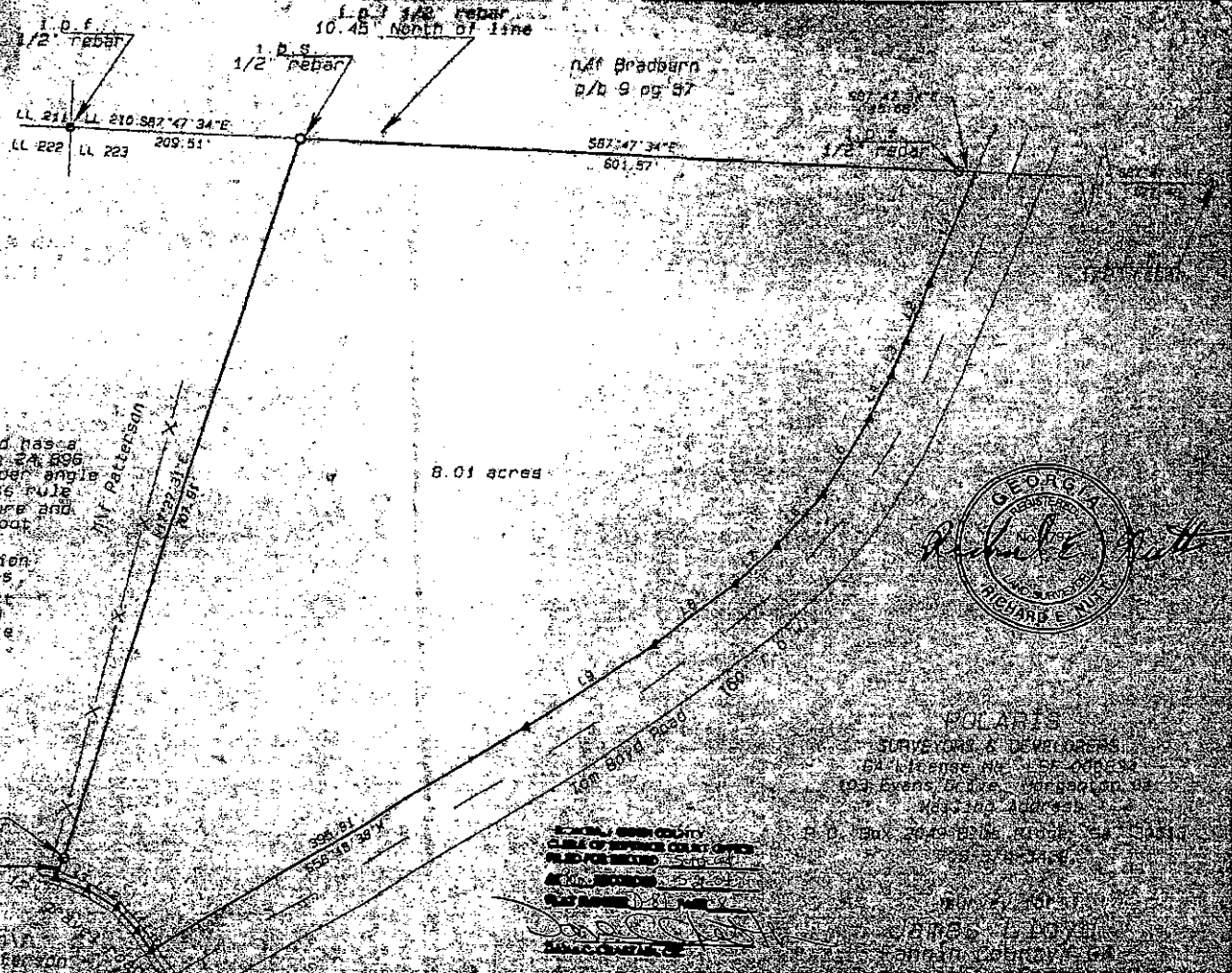


LINE	BEARING	DISTANCE
L1	S22°42'30"W	211.22'
L2	S21°40'02"W	59.89'
L3	S23°19'31"W	39.88'
L4	S25°02'52"W	48.94'
L5	S30°44'32"W	83.77'
L6	S46°01'51"W	64.54'
L7	S49°42'19"W	53.54'
L8	S59°04'31"W	84.47'
L9	S66°02'22"W	141.23'
L10	N35°47'17"W	22.70'
L11	N42°31'24"W	28.73'
L12	N59°07'14"W	31.62'
L13	N70°47'59"W	39.32'



the data upon which this survey is based has a relative closure precision of one foot in 24,896 feet and a relative angular error of 3" per angle point and was adjusted using the compass rule this plat has been calculated for closure and is found to be accurate within one foot in 230,000 feet

surveyed with Topcon 212 total station for angular and linear measurements
 In my opinion this plat is a correct representation of the land plotted and has been prepared in accordance with the minimum standards and requirements of

Richard E. North
 Richard E. North, Ge. S. L. S. # 1797

Legend
 Iron pin set
 Copper pipe found
 Wood pin found
 Property line
 Center line

STATE OF GEORGIA
 COUNTY OF DEKALB
 PLAT FOR RECORD
 BOOK 100 PAGE 100
 FILED FOR RECORD
 DEPARTMENT OF REVENUE
 AUGUST 1, 1997

GRAPHIC SCALE



7-818