

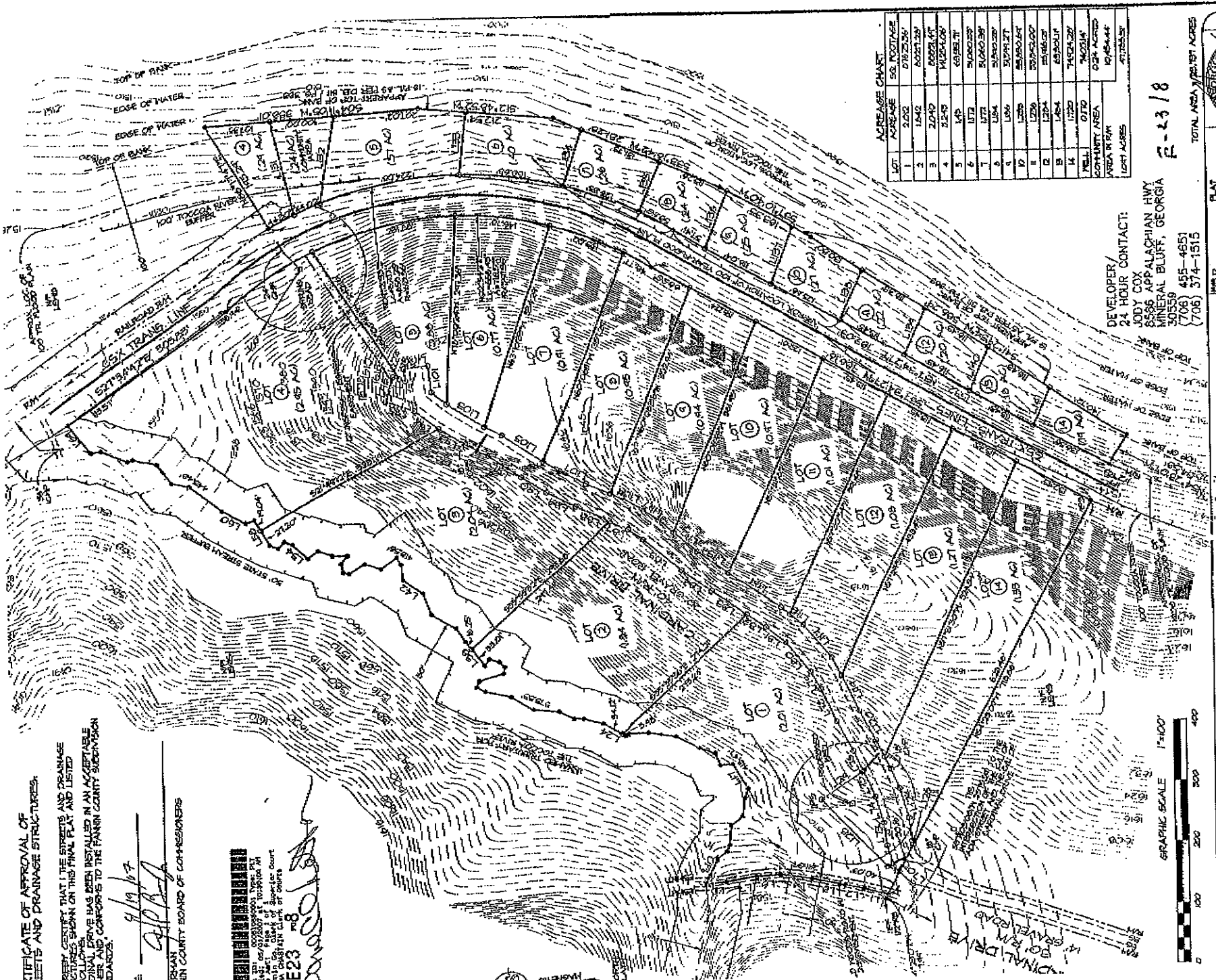


**CERTIFICATE OF APPROVAL OF STREETS AND DRAINAGE STRUCTURES.**

"WHEREBY CERTIFY THAT THE STREETS AND DRAINAGE STRUCTURES SHOWN ON THIS FINAL PLAN AND LISTED AS FOLLOWS  
 CARDINAL DRIVE HAS BEEN INSTALLED IN AN ACCEPTABLE MANNER AND CONFORMS TO THE FANNIN COUNTY SUBDIVISION STANDARDS.

DATE: 9/19/17  
 SUPERVISOR [Signature]  
 FANNIN COUNTY BOARD OF COMMISSIONERS

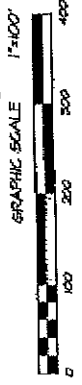
PLAT NO. 88-0000000000-0000-01  
 PART 1 of 1  
 E23  
 [Signature]



LOT	ACRESAGE	SQ. FOOTAGE
1	2.00	138,689
2	1.41	97,287
3	2.04	140,247
4	1.25	85,800
5	1.71	118,111
6	1.77	123,029
7	1.06	73,007
8	1.77	123,029
9	1.06	73,007
10	1.77	123,029
11	1.06	73,007
12	1.77	123,029
13	1.06	73,007
14	1.77	123,029
15	1.06	73,007
16	1.77	123,029
17	1.06	73,007
TOTAL	20.88	145,844

DEVELOPER/  
 24 HOUR CONTACT:  
 JODY COX  
 8586 APPALACHIAN HWY  
 MINERAL BLUFF, GEORGIA  
 30559  
 (706) 455-4651  
 (706) 374-1515

8/27/18



**Landtech**  
 SERVICES, INC.  
 Knowledge Through Experience

FINAL PLAN FOR  
**McKENZIE RIDGE OVERLOOK**  
 LOCATED IN  
 LAND LOT 191, 8th DISTRICT, 2nd SECTION  
 FANNIN COUNTY, GEORGIA

FIELD DATE: 8/15/18  
 DISCUS: [Blank]  
 PLAT DATE: 10/20/18  
 SCALE: 1" = 100'  
 L&S #: 24-170-004  
 FILE #: 24-170-004-170  
 SHEET # 2 OF 2  
 DRAWN BY: SHR. CHECKED BY: J.A.



