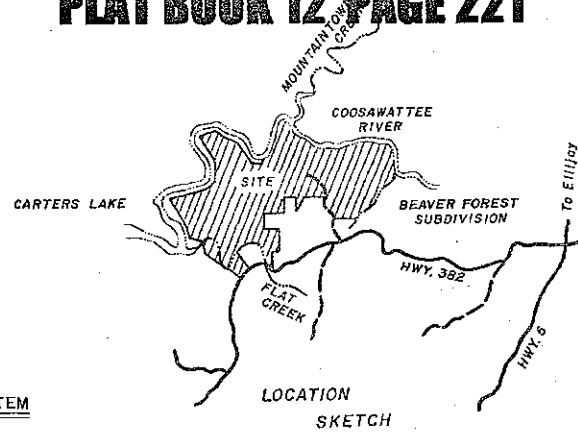


FINAL PLAT
EAGLE'S MOUNTAIN RESORT, UNIT 14
 LAND LOTS 298 & 315
 25th DISTRICT, 2nd SECTION
 GILMER COUNTY, GEORGIA



OWNER:
 EAGLE'S MOUNTAIN RESORT, INC.
 100 BEAVER LAKE DRIVE
 ELLIJAY, GEORGIA 30540
 TELE: (404) 635-5681

APPROVAL OF INDIVIDUAL SEWERAGE DISPOSAL SYSTEM

I HEREBY CERTIFY THAT THE LOTS FOR INDIVIDUAL OR PRIVATE SEWERAGE DISPOSAL SYSTEM IN EAGLE'S MTN. RESORT, INC. MEETS THE REQUIREMENTS OF CHAPTER 290-5-26 OF THE REGULATIONS AS PROMULGATED BY THE GILMER CO. HEALTH DEPARTMENT. THE LOCATION AND APPROVAL OF EACH INDIVIDUAL DISPOSAL SYSTEM WILL BE SUBJECT TO INDIVIDUAL INSPECTION AND APPROVAL BY THE COUNTY HEALTH OFFICER PRIOR TO INSTALLATION AND COVERING.

THIS THE 16 DAY OF January, 1984.

[Signature]
 COUNTY HEALTH OFFICER

CERTIFICATION OF STREETS

I HEREBY CERTIFY THAT THE STREETS AND OTHER ACCESSWAYS INSTALLED IN EAGLE'S MOUNTAIN RESORT, INC., UNIT 14, FULLY MEET THE REQUIREMENTS OF GILMER COUNTY AND ARE HEREBY APPROVED.

[Signature] 1-16-85
 COUNTY COMMISSIONER DATE

CERTIFICATION OF PUBLIC WATER SYSTEM

I HEREBY CERTIFY THAT THE WATER SYSTEM INSTALLED OR PROPOSED FOR INSTALLATION AND THE SURETY PROVIDED THEREFORE IN EAGLE'S MOUNTAIN RESORT, INC., UNIT 14, FULLY MEET THE REQUIREMENTS OF THE GILMER COUNTY WATER DEPARTMENT AND ARE HEREBY APPROVED.

[Signature] 1-16-85
 COUNTY COMMISSIONER DATE

OWNER'S CERTIFICATION

STATE OF GEORGIA, COUNTY OF GILMER.
 THE OWNER OF THE LAND SHOWN HEREON AND WHOSE NAME IS SUBSCRIBED HERETO, IN PERSON OR THROUGH A DULY AUTHORIZED AGENT, CERTIFIES THAT THIS PLAT WAS MADE FROM AN ACTUAL SURVEY, THAT ALL STATE, CITY AND COUNTY TAXES OR OTHER ASSESSMENT, NOW DUE ON THIS LAND HAVE BEEN PAID.

EAGLE'S MOUNTAIN RESORT, INC.

[Signature] 1/17/85
 V. PRESIDENT DATE

SURVEYOR'S CERTIFICATION

IT IS HEREBY CERTIFIED THAT THE PLAT IS TRUE AND CORRECT AND WAS PREPARED FROM AN ACTUAL SURVEY OF THE PROPERTY BY ME OR UNDER MY SUPERVISION; THAT ALL MONUMENTS SHOWN HEREON ACTUALLY EXIST OR ARE MARKED "FUTURE", AND THEIR LOCATION, SIZE, TYPE AND MATERIAL ARE CORRECTLY SHOWN; AND THAT ALL ENGINEERING REQUIREMENTS OF THE REGIONAL LAND SUBDIVISION REGULATIONS OF THE NORTH GEORGIA AREA PLANNING AND DEVELOPMENT COMMISSION HAVE BEEN FULLY COMPLIED WITH.

[Signature]
 BURNS L. JEFFRIES, RLS 2036

CERTIFICATE OF APPROVAL FOR RECORDING

PERSUANT TO THE LAND SUBDIVISION DEVELOPMENT REGULATIONS OF THE NORTH GEORGIA PLANNING AND DEVELOPMENT COMMISSION AND ALL REQUIREMENTS OF APPROVAL HAVE BEEN FULFILLED, THIS FINAL PLAT WAS GIVEN FINAL APPROVAL BY THE NORTH GA. AREA PLANNING AND DEVELOPMENT COMMISSION ON 1/17, 1985.

[Signature]
 SECRETARY, NORTH GEORGIA AREA
 PLANNING & DEVELOPMENT COMMISSION

NOTES:

- (1) AREA: 62 ± AC
- (2) ALL STREETS SHOWN HEREON ARE PRIVATE.
- (3) UNLESS OTHERWISE INDICATED, THE FRONT BUILDING SET-BACK SHALL BE THIRTY-FIVE (35) FEET.
- (4) NON-EXCLUSIVE EASEMENTS FOR THE INSTALLATION AND MAINTENANCE OF DRAINAGE AND UTILITY LINES AND APPURTENANCES ARE RESERVED OVER, UNDER AND ACROSS A STRIP OF LAND TEN (10) FEET IN WIDTH CONTIGUOUS TO ALL LOT AND BOUNDARY LINES. ADDITIONAL DRAINAGE EASEMENTS ARE RESERVED AT THE LOCATIONS AND TO THE WIDTHS AS SHOWN HEREIN.
- (5) EASEMENTS ARE RESERVED ACROSS ALL LOTS FOR ALL NECESSARY CONSTRUCTION AND MAINTENANCE OF ROADS.
- (6) O.E. INDICATES DRAINAGE EASEMENTS.
- (7) THIS PLAT IS SUBJECT TO THE COVENANTS SET FORTH IN THE SEPARATE DOCUMENTS ATTACHED HERETO, 19 , RECORDED , 19 , AND WHICH BECAME A PART OF THIS PLAT.
- (8) A TRAVERSE OF THE SUBDIVISION BOUNDARY WAS EFFECTED WITH A POSITION CLOSURE OF 1/18,000.
- (9) LOTS: 67



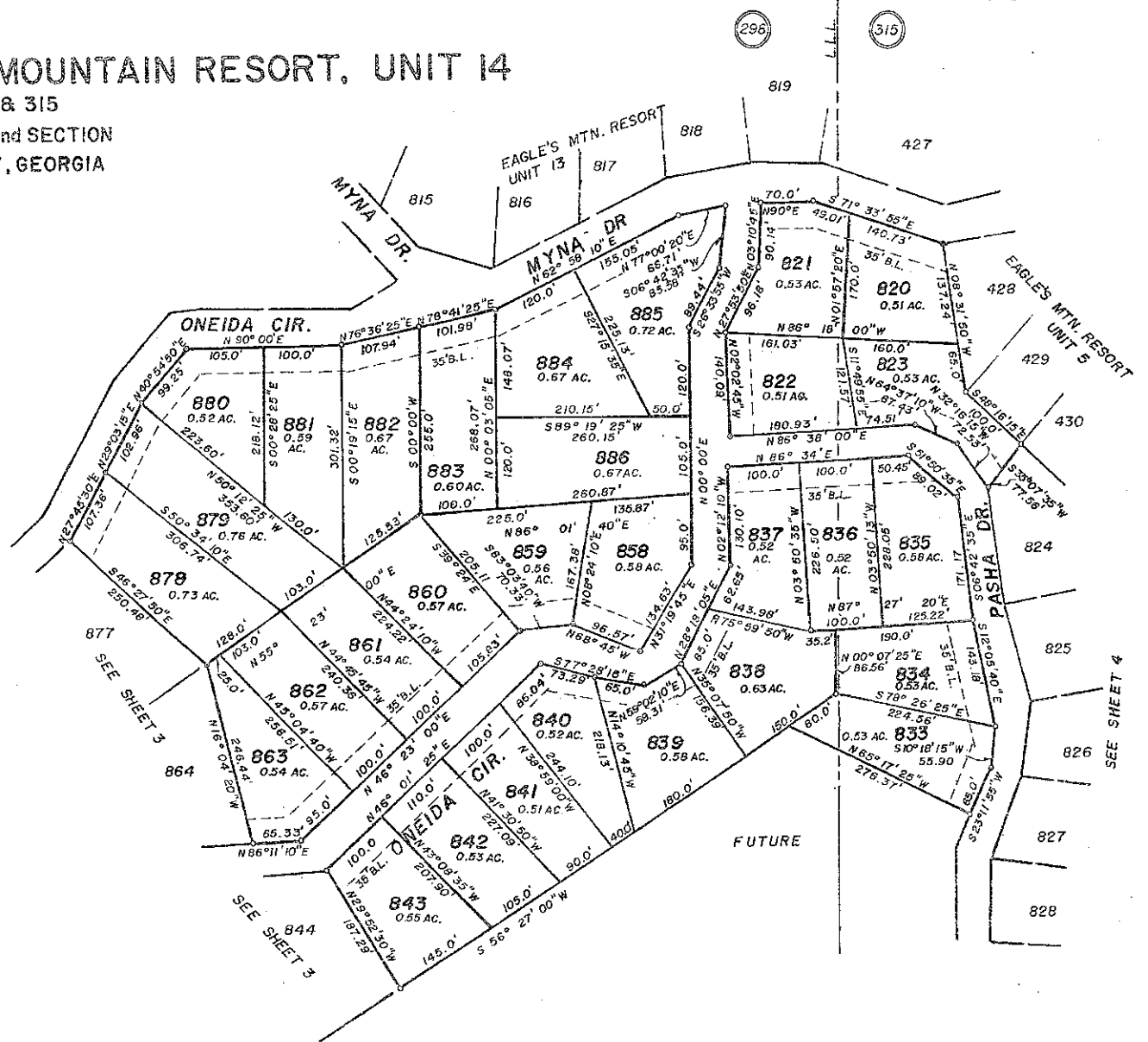
1-15-85

burns l. jeffries & assoc.

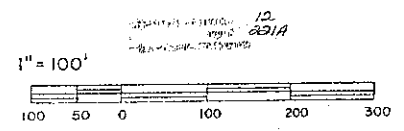
Cunning, Georgia
 (404) 387-0130

Filed in office of Clerk of Superior Court
 Gilmer County, Georgia, this 17
 day of January, 1985
1985
[Signature]

FINAL PLAT
EAGLE'S MOUNTAIN RESORT, UNIT 14
LAND LOTS 298 & 315
25th DISTRICT, 2nd SECTION
GILMER COUNTY, GEORGIA



GEODETIC NORTH



burns l. jeffries & assoc.

Surveying Station
1404) 887-0130

GM-419