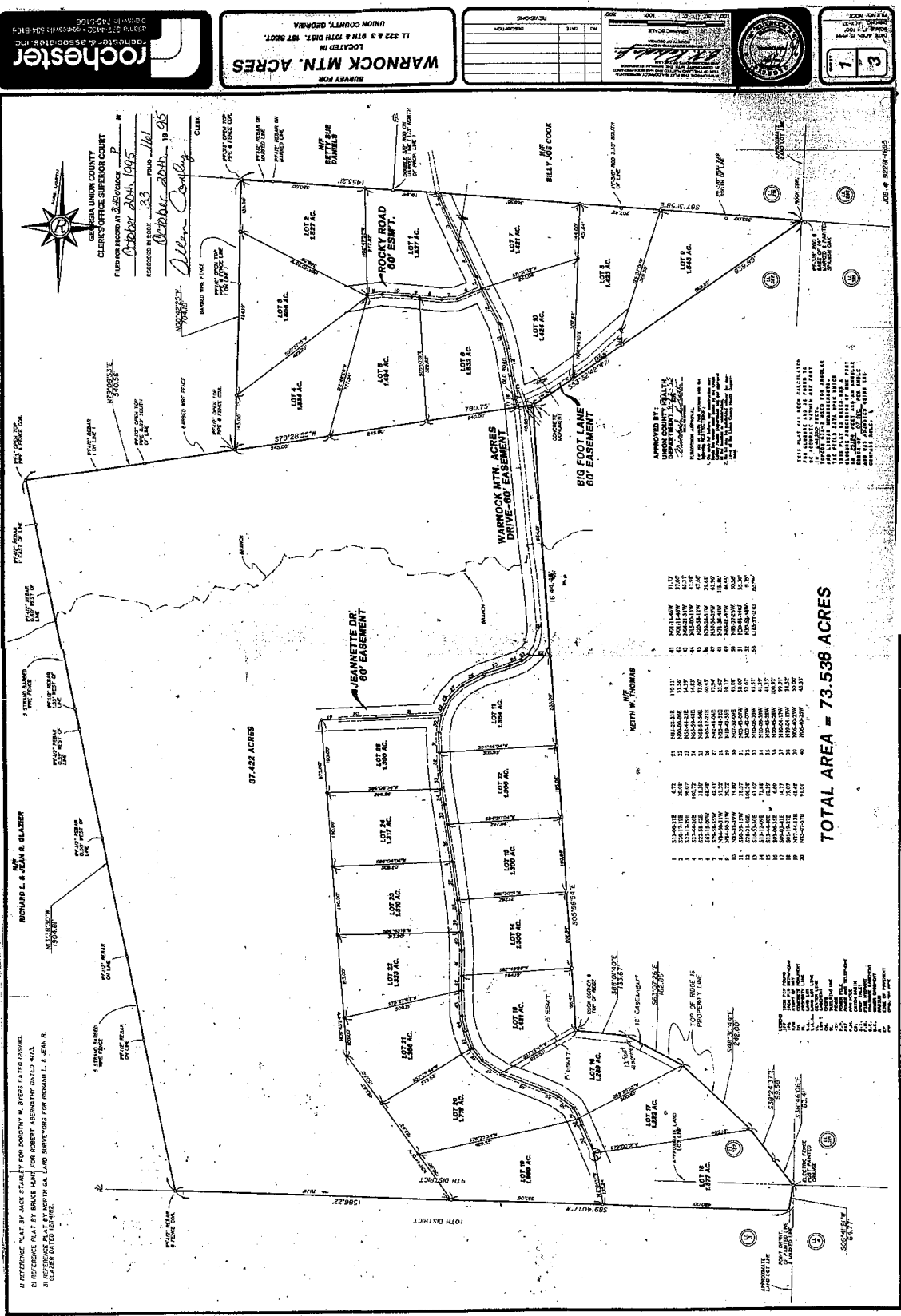


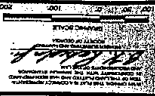
PB 33 ps 161



rochester
 ROCHESTER ASSOCIATES, INC.
 5745 W. 100th St.
 Overland Park, MO 66204
 (816) 425-1000

WARNOCK MTN. ACRES
 SHERIFF FOR
 LOCATED IN
 11 222 & 9TH & 10TH DIST. 1ST SECT.
 UNION COUNTY, GEORGIA

NO.	DATE	DESCRIPTION	RECORDS



1
3

CLERK'S OFFICE SUPERIOR COURT
 GEORGIA UNION COUNTY
 FILED FOR RECORD IN 2005
 October 20th, 1995
 October 20th, 1995
 Clerk

APPROVED BY
 UNION COUNTY HEALTH
 DEPARTMENT
 10/20/95

TOTAL AREA = 73.538 ACRES

LOT NO.	ACRES	OWNER
1	1.000	KEITH W. THOMAS
2	1.000	KEITH W. THOMAS
3	1.000	KEITH W. THOMAS
4	1.000	KEITH W. THOMAS
5	1.000	KEITH W. THOMAS
6	1.000	KEITH W. THOMAS
7	1.000	KEITH W. THOMAS
8	1.000	KEITH W. THOMAS
9	1.000	KEITH W. THOMAS
10	1.000	KEITH W. THOMAS
11	1.000	KEITH W. THOMAS
12	1.000	KEITH W. THOMAS
13	1.000	KEITH W. THOMAS
14	1.000	KEITH W. THOMAS
15	1.000	KEITH W. THOMAS
16	1.000	KEITH W. THOMAS
17	1.000	KEITH W. THOMAS
18	1.000	KEITH W. THOMAS
19	1.000	KEITH W. THOMAS
20	1.000	KEITH W. THOMAS
21	1.000	KEITH W. THOMAS
22	1.000	KEITH W. THOMAS
23	1.000	KEITH W. THOMAS
24	1.000	KEITH W. THOMAS
25	1.000	KEITH W. THOMAS
26	1.000	KEITH W. THOMAS
27	1.000	KEITH W. THOMAS
28	1.000	KEITH W. THOMAS
29	1.000	KEITH W. THOMAS
30	1.000	KEITH W. THOMAS
31	1.000	KEITH W. THOMAS
32	1.000	KEITH W. THOMAS
33	1.000	KEITH W. THOMAS
34	1.000	KEITH W. THOMAS
35	1.000	KEITH W. THOMAS
36	1.000	KEITH W. THOMAS
37	1.000	KEITH W. THOMAS
38	1.000	KEITH W. THOMAS
39	1.000	KEITH W. THOMAS
40	1.000	KEITH W. THOMAS
41	1.000	KEITH W. THOMAS
42	1.000	KEITH W. THOMAS
43	1.000	KEITH W. THOMAS
44	1.000	KEITH W. THOMAS
45	1.000	KEITH W. THOMAS
46	1.000	KEITH W. THOMAS
47	1.000	KEITH W. THOMAS
48	1.000	KEITH W. THOMAS
49	1.000	KEITH W. THOMAS
50	1.000	KEITH W. THOMAS
51	1.000	KEITH W. THOMAS
52	1.000	KEITH W. THOMAS
53	1.000	KEITH W. THOMAS
54	1.000	KEITH W. THOMAS
55	1.000	KEITH W. THOMAS
56	1.000	KEITH W. THOMAS
57	1.000	KEITH W. THOMAS
58	1.000	KEITH W. THOMAS
59	1.000	KEITH W. THOMAS
60	1.000	KEITH W. THOMAS
61	1.000	KEITH W. THOMAS
62	1.000	KEITH W. THOMAS
63	1.000	KEITH W. THOMAS
64	1.000	KEITH W. THOMAS
65	1.000	KEITH W. THOMAS
66	1.000	KEITH W. THOMAS
67	1.000	KEITH W. THOMAS
68	1.000	KEITH W. THOMAS
69	1.000	KEITH W. THOMAS
70	1.000	KEITH W. THOMAS
71	1.000	KEITH W. THOMAS
72	1.000	KEITH W. THOMAS
73	1.000	KEITH W. THOMAS
74	1.000	KEITH W. THOMAS
75	1.000	KEITH W. THOMAS
76	1.000	KEITH W. THOMAS
77	1.000	KEITH W. THOMAS
78	1.000	KEITH W. THOMAS
79	1.000	KEITH W. THOMAS
80	1.000	KEITH W. THOMAS
81	1.000	KEITH W. THOMAS
82	1.000	KEITH W. THOMAS
83	1.000	KEITH W. THOMAS
84	1.000	KEITH W. THOMAS
85	1.000	KEITH W. THOMAS
86	1.000	KEITH W. THOMAS
87	1.000	KEITH W. THOMAS
88	1.000	KEITH W. THOMAS
89	1.000	KEITH W. THOMAS
90	1.000	KEITH W. THOMAS
91	1.000	KEITH W. THOMAS
92	1.000	KEITH W. THOMAS
93	1.000	KEITH W. THOMAS
94	1.000	KEITH W. THOMAS
95	1.000	KEITH W. THOMAS
96	1.000	KEITH W. THOMAS
97	1.000	KEITH W. THOMAS
98	1.000	KEITH W. THOMAS
99	1.000	KEITH W. THOMAS
100	1.000	KEITH W. THOMAS

1) REFERENCE PLAT BY JACK STANLEY FOR COUNTY W. BUREAU DATED 1988B.
 2) REFERENCE PLAT BY BRUCE HAY FOR ROBERT ABERNATHY DATED 4/12/83.
 3) REFERENCE TO 1977 NORTH GA. LAND SURVEYORS FOR RICHARD L. & JEAN R. GLAZIER DATED 10/11/83.