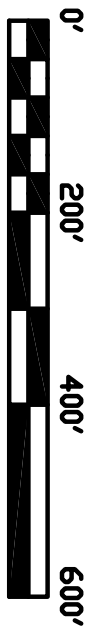
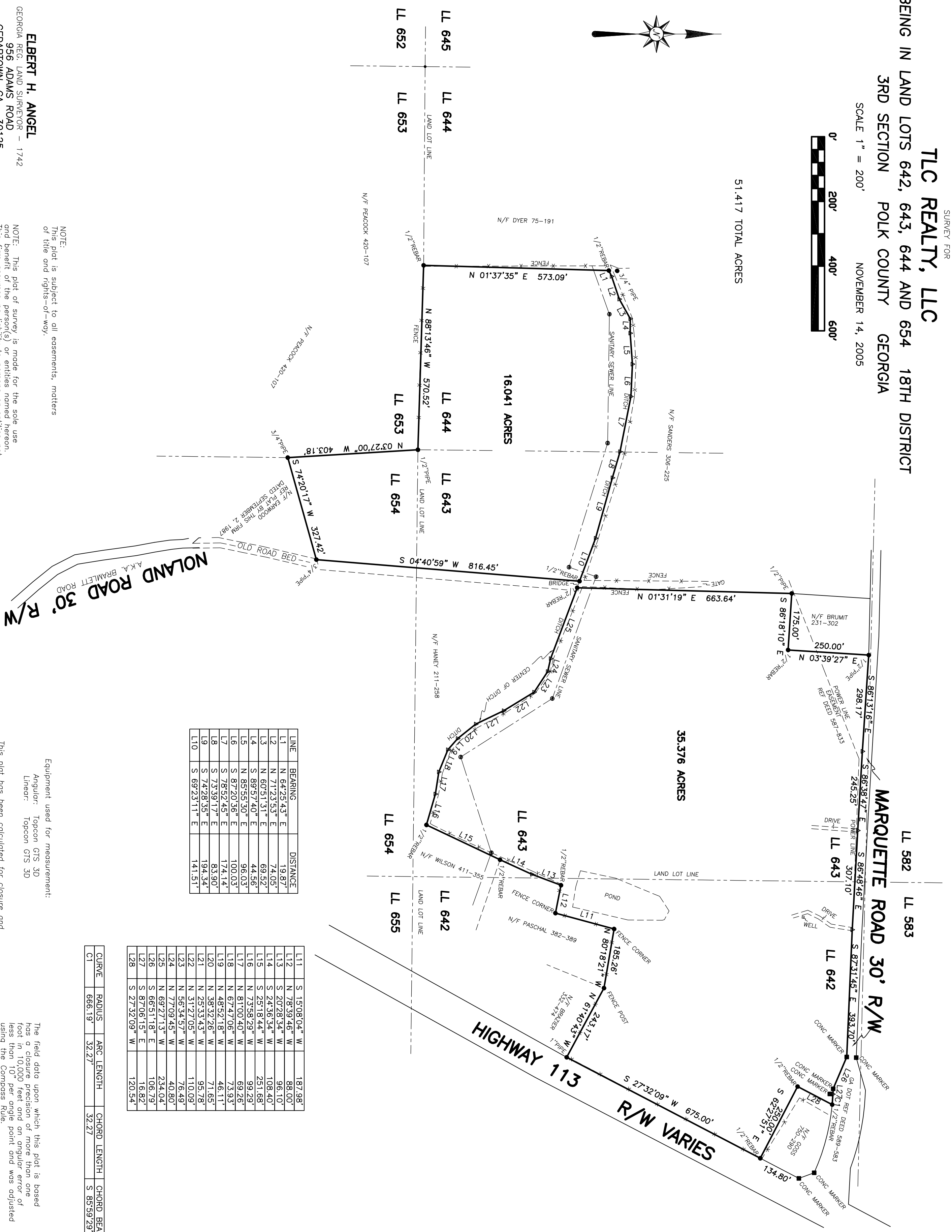


SURVEY FOR
TLC REALTY, LLC
BEING IN LAND LOTS 642, 643, 644 AND 654 18TH DISTRICT
3RD SECTION POLK COUNTY GEORGIA

SCALE 1" = 200'
NOVEMBER 14, 2005



51.417 TOTAL ACRES



LINE	BEARING	DISTANCE
L1	N 64°25'43" E	19.87
L2	N 71°23'53" E	74.05
L3	N 60°51'31" E	69.52
L4	S 89°57'40" E	44.56
L5	N 85°55'30" E	96.03
L6	S 87°20'36" E	100.03
L7	S 78°52'45" E	174.14
L8	S 73°39'17" E	83.90
L9	S 74°28'35" E	194.34
L10	S 69°23'11" E	141.51

L11	S 15°08'04" W	187.98
L12	N 78°39'46" W	88.00
L13	S 20°28'34" W	96.10
L14	S 24°36'34" W	108.40
L15	S 25°18'44" W	251.68
L16	N 73°58'29" W	99.29
L17	N 81°00'40" W	69.26
L18	N 67°47'06" W	73.93
L19	N 48°52'18" W	46.11
L20	N 38°32'26" W	71.65
L21	N 25°33'43" W	95.78
L22	N 31°27'05" W	110.09
L23	N 56°34'57" W	76.49
L24	N 77°09'45" W	40.80
L25	N 69°27'13" W	234.04
L26	S 66°51'18" E	106.79
L27	S 87°06'15" E	16.82
L28	S 27°32'09" W	120.54

CURVE	RADIUS	ARC LENGTH	CHORD LENGTH	CHORD BEARING
C1	666.19	32.27	32.27	S 85°59'29" E

NOTE:
This plot is subject to all easements, matters of title and rights-of-way.

Equipment used for measurement:
Angular: Topcon GTS 3D
Lineor: Topcon GTS 3D

The field data upon which this plot is based has a closure precision of more than one foot in 10,000 feet and an angular error of less than 10" per angle point and was adjusted using the Compass Rule.

ELBERT H. ANGEL
GEORGIA REG. LAND SURVEYOR - 1742
956 ADAMS ROAD
CEDARTOWN, GA. 30125
(770) 748-0419